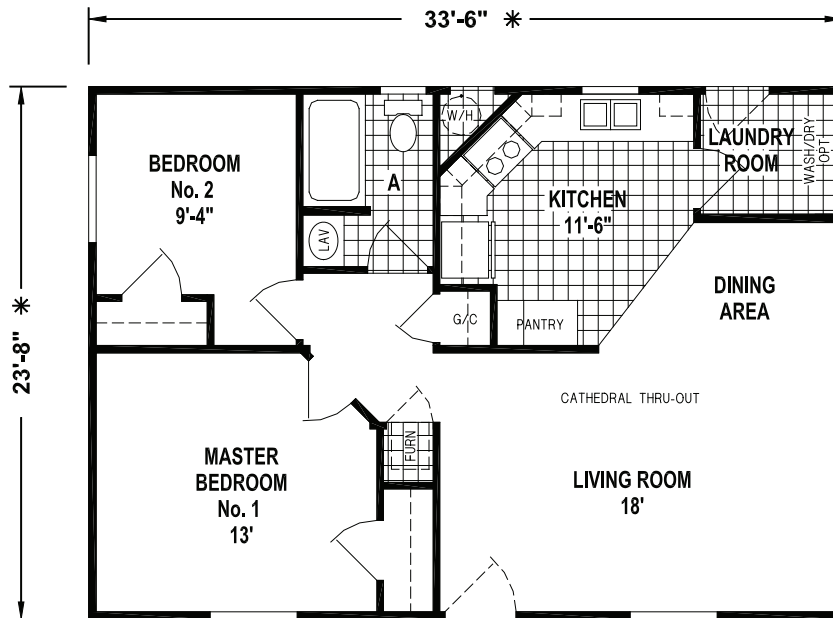
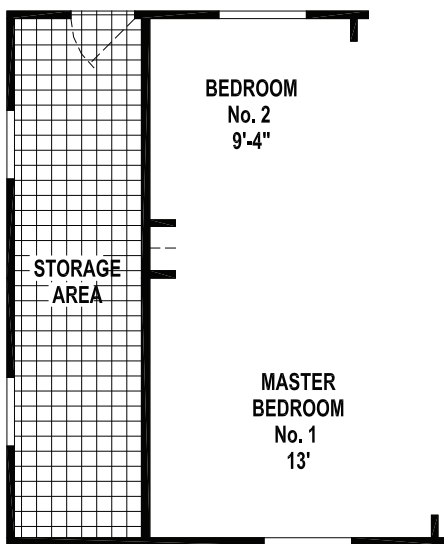


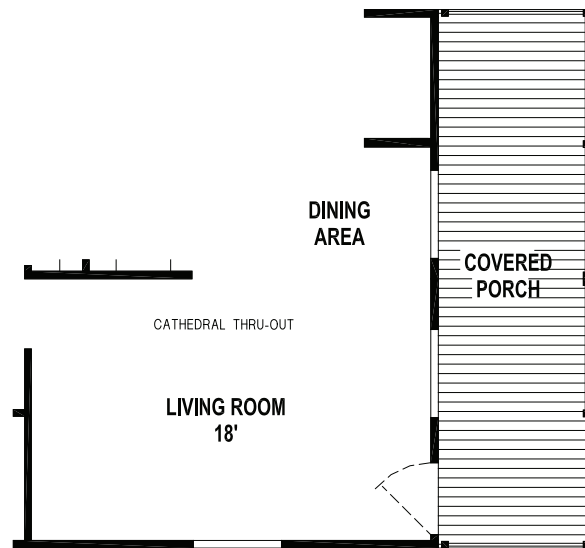
# Amber Cove



K601CT/33'624 (792 SQ. FT.) 2BEDROOM - CATHEDRAL THRU-OUT



OPTION STORAGE AREA



OPTION PORCH

**IDEAL  
MANUFACTURED  
HOMES**

**Please Contact us at:**

E-mail : [info@idealmfghomes.com](mailto:info@idealmfghomes.com)

(619) 442-1611 or toll free (888) 442-1611 • Fax: (619) 442-5664

1500 E. Main St. El Cajon, CA 92021



**SKYLINE**<sup>®</sup>  
BRINGING AMERICA HOME. BRINGING AMERICA FUN.